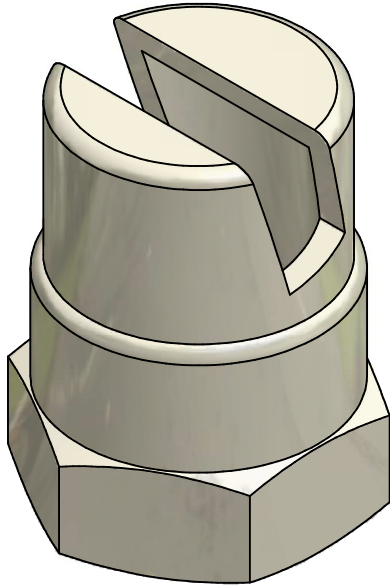
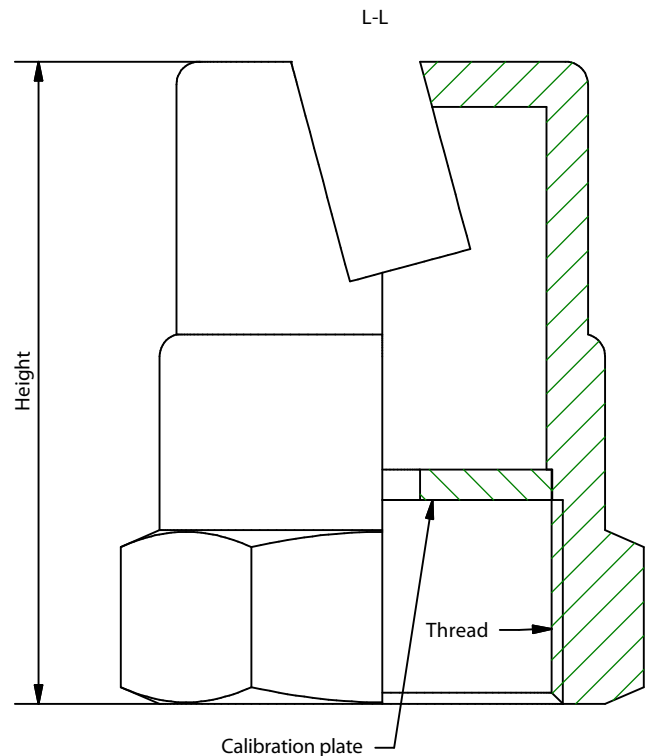
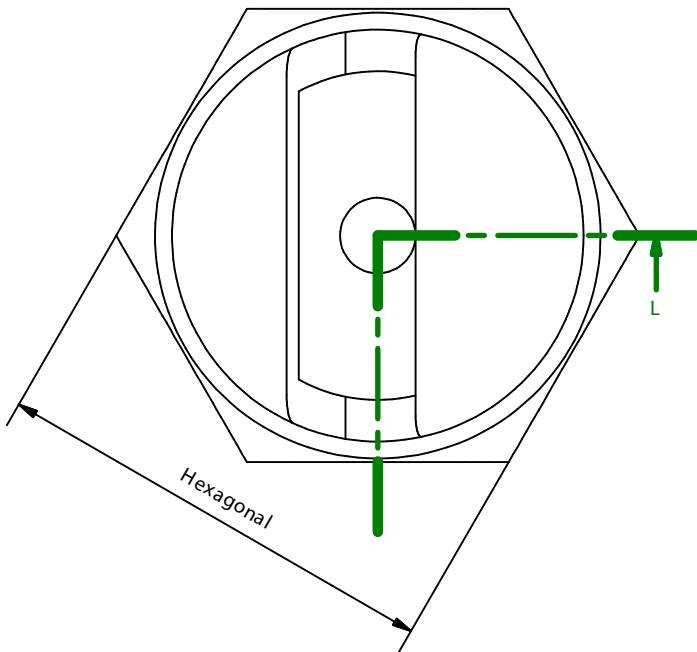




CALIBRATED JET DIFFUSER AEX/DCHxx



Reference	Thread	Height	Hexagonal	Weight
AEX/DCH14	Female Gas 1/4"	30 mm	18 mm	31 g
AEX/DCH38	Female Gas 3/8"	35 mm	22 mm	51 g
AEX/DCH12	Female Gas 1/2"	46 mm	27 mm	100 g
AEX/DCH34	Female Gas 3/4"	50 mm	32 mm	136 g
AEX/DCH1	Female Gas 1"	60 mm	40 mm	258 g
AEX/DCH114	Female Gas 1 1/4"	70 mm	50 mm	418 g
AEX/DCH112	Female Gas 1 1/2"	85 mm	60 mm	755 g



Specifications	
Name	Value
Body material	Steel F212
Body Finished	Chrome
Calibration plate material	Brass



Av. Alfonso Peña Boeuf, 6 y 9
28022 MADRID - ESPAÑA
TEL: +34 913121656
FAX: +34 913295820

DATA SHEET CALIBRATED JET DIFFUSER

Description: Component that allows to obtain a predetermined flow and a characteristic of uniform distribution of the extinguishing agent inside or on the protected risk.

Code sheet:	Group sheet:	Reference:	Drawn:	Date:	Revised:	Date:	Review:	Format:
AEX-FTC-61-035	FK-5-1-12	VER TABLA	DCM	26/07/2017	MRC	26/07/2017	1	A4